

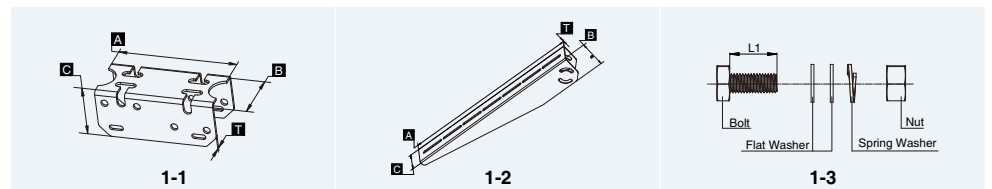
Side of Pole/Wall Mount Bracket (For use with Solarland SLP010 – SLP040 Panels) SLB-0112

The Solarland® SLB-0112 has been specifically designed to be used with the Solarland® SLP Series panels ranging in size from 10W – 40W. This simple fixed bracket provides a safe and secure mount to a pole, wall, fence or any flat surface.

Specifications

| | |
|-------------------|--|
| Mounting Type | Side of Pole/Wall Mount |
| Module Type | Specifically designed to work with Solarland SLP series panels, but can be adapted for use with other panels |
| Number of Modules | Mounts 1 Panel |
| Setting Angle | 0°-90° |
| Wind Load | Designed to withstand wind speeds of 90mph |
| Snow Loading | 1.1kN/m ² |
| Warranty | 5 Years |

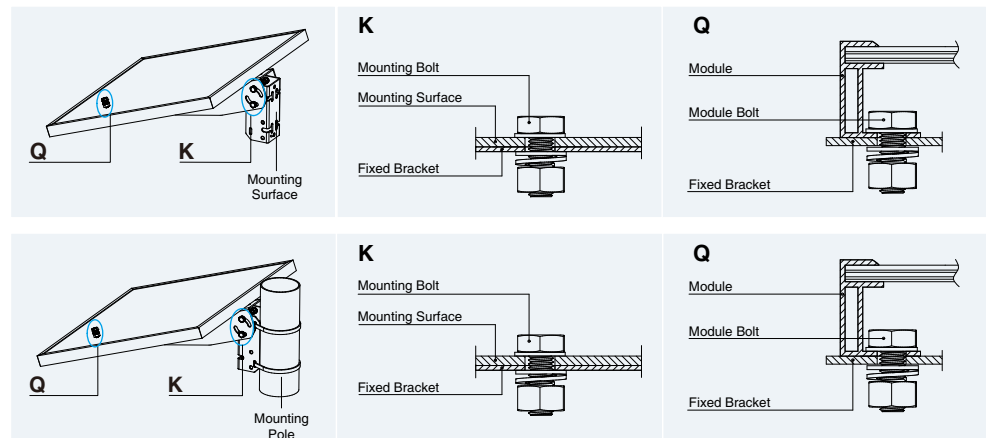
Components and Parts



| Diagram | Component | Material | Surface Treatment | Quantity | Dimensions |
|---------|---------------|----------|-------------------|----------|---|
| 1-1 | Fixed Bracket | 5052Al | N/A | 1 | A=160mm[6.30in.], B=69mm[2.72in.], C=66mm[2.60in.], T=3mm[0.12in.] |
| 1-2 | Tilt Arm | 5052Al | N/A | 1 | A=550mm[21.65in.], B=82mm[3.23in.], C=76mm[2.99in.], T=3mm[0.12in.] |
| 1-3 | Module Bolt | AISI304 | N/A | 2 | M8X20[0.79in.] |
| | Mounting Bolt | AISI304 | N/A | 4 | M8X20[0.79in.] |

*Note: U-Bolt is NOT provided with the kit!

Mounting Diagram



Note:

- When using this kit with another brand of panel you may need to change the module bolts (1-2) to suit the mounting holes on the panel.

**Side of Pole/Wall
Mount Bracket
(For use with Solarland
SLP010 – SLP040 Panels)
SLB-0112**

info@solarland.com
www.solarlandusa.com

