



Battery Specification Sheet

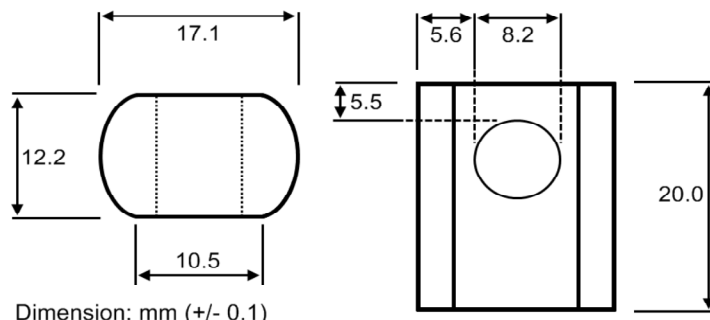
SLA1185

Technical Specifications

Nominal Voltage	12 V
Nominal Capacity	100 Ah (20 Hr Rate)
Chemistry	Lead Acid - AGM

Physical Specifications

Length:	305 mm	12.01 in.
Width:	168 mm	6.61 in.
Height:	207 mm	8.15 in.
Height w/ Terminal:	230 mm	9.06 in.
Weight	29.00 kg	63.9 lbs.
Terminal Type	Universal Flag	
Case Material	Black ABS	



Charging Specifications

	Bloc	Per Cell
Charge Voltage	Float 13.5~13.8	2.25~2.30
(constant)	Cycle 14.4~14.7	2.40~2.45
Max. Charge Current	30 A	

Due to changes in the manufacturing processes, specifications are subject to change without notice

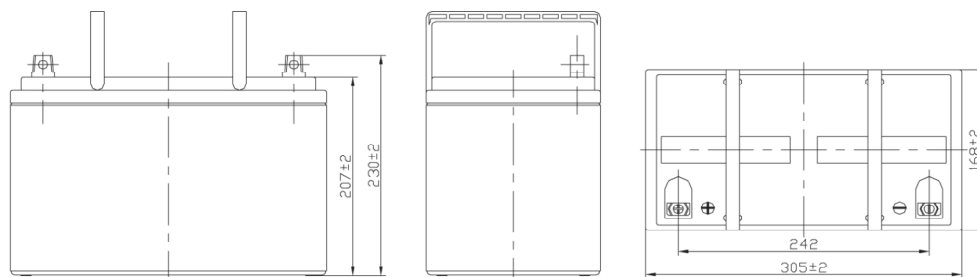
Capacity Specifications

Discharge Current	1000 A
(5 seconds maximum)	
Self Discharge	6 months @ 21 °C
(to 80% capacity)	
Internal Resistance	4.8 mΩ

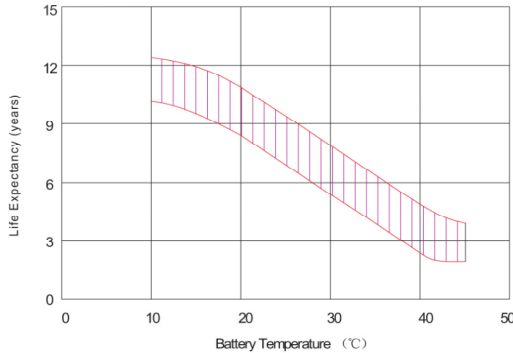
Due to changes in the manufacturing processes, specifications are subject to change without notice



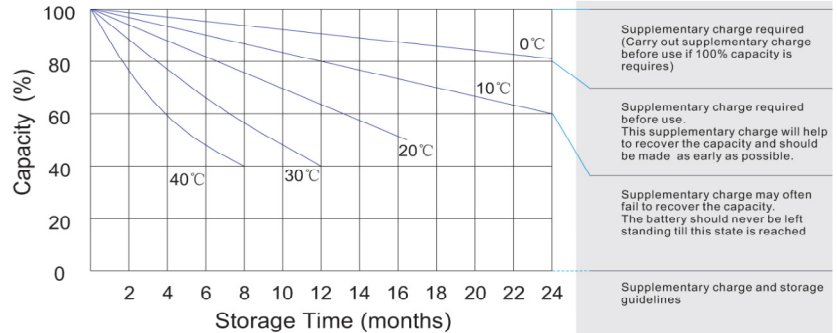
Unit: mm Dimension: 305(L)×168(W)×230(H)



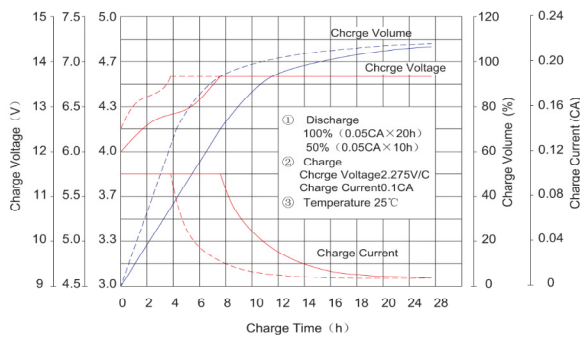
EFFECT OF TEMPERATURE ON LONG TERM FLOAT LIFE



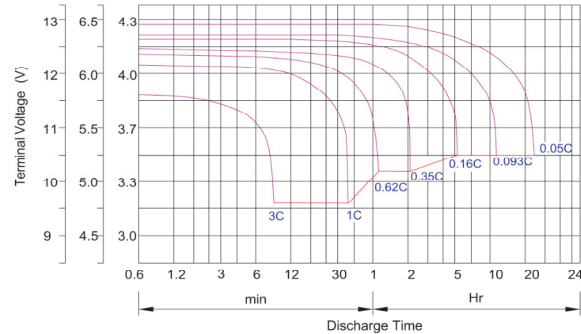
STORAGE CHARACTERISTIC



CHARGE CHARACTERISTIC CURVE FOR STANDBY USE



DISCHARGE CHARACTERISTIC CURVE



Constant Current Discharge Characteristics: A (25°C)

F.V/Time	5MIN	10MIN	15MIN	30MIN	1HR	2HR	3HR	4HR	5HR	8HR	10HR	20HR
9.60V	314.5	231.6	177.8	115.0	65.00	36.31	26.10	21.60	17.68	12.42	10.50	5.55
10.0V	305.4	220.3	174.2	113.1	64.70	36.04	26.00	21.50	17.58	12.32	10.40	5.45
10.2V	296.4	212.5	171.5	112.1	64.10	35.76	25.80	21.40	17.47	12.22	10.30	5.35
10.5V	266.1	196.1	163.2	109.3	63.50	35.49	25.70	21.20	17.26	12.12	10.20	5.25
10.8V	240.2	178.8	150.5	104.5	62.00	34.85	25.00	20.70	16.95	11.92	10.10	5.15
11.1V	209.1	159.8	135.0	97.90	58.90	33.31	23.90	19.70	16.22	11.41	9.80	4.85

Constant Power Discharge Characteristics: W(25°C)

F.V/Time	5MIN	10MIN	15MIN	30MIN	1HR	2HR	3HR	4HR	5HR	8HR	10HR	20HR
9.60V	3298	2462	1914	1233	743.4	417.7	301.2	249.6	204.7	144.1	118.1	62.38
10.0V	3210	2352	1874	1218	739.8	416.1	300.6	249.0	203.4	143.5	116.9	61.78
10.2V	3114	2273	1848	1203	734.4	412.2	298.8	247.8	202.8	142.3	116.3	61.17
10.5V	2804	2101	1763	1176	727.2	408.4	297.0	246.0	200.9	141.1	115.1	60.56
10.8V	2522	1907	1619	1122	709.2	402.4	289.8	239.4	197.8	138.1	113.9	59.96
11.1V	2177	1694	1446	1052	672.0	383.8	275.4	228.0	187.8	133.2	110.2	57.54

CAUTION: Do not charge in a sealed container. Avoid Short Circuit. Before using this battery in high current applications(>3C), consult with Interstate Batteries.

Notes: Leak-proof/spill-proof. Most SLA(Sealed Lead Acid) batteries now use AGM(Absorbent Glass Mat) technology which has largely replaced the old "gel" technology. In an AGM battery, fiberglass mats absorb the acid and hold it against the lead plates inside the battery. Because the acid is absorbed by the sponge-like mats, it will not leak or spill (provided proper charging and usage instructions are followed). Additional safety features include the use of special sealing epoxies, tongue-and-groove case and cover construction as well as long sealing paths for post and connectors. Our AGM batteries are approved for all modes of transport(water, road, rail, air, etc.).