



Ameresco Solar supplies and distributes a complete line of enclosures to accommodate a wide range of off-grid applications. We have a large selection of enclosures and control cabinets ranging from single battery (for pole and ROHN towers) to custom skid-mounted, multi-battery enclosures. Our enclosure line has the flexibility to meet your solar system storage needs.

## BBA-10 Series Features:

### NEMA Ratings & UL Listings

- NEMA 3R (Standard), NEMA 4, NEMA 4X
- UL 508A

### Available Material and Finish

- Mill finished aluminum (Standard)
- Powder coated aluminum (White)
- Stainless steel (304 or 316)

### Enclosure Dimensions

- Overall: (H) 17.5" x (W) 51.25" x (D) 26"
- Opening: (H) 23.25" x (W) 47.25"
- Inside: (H) 15.875" x (W) 48" x (D) 24"

### Back Panel Dimensions

- (H) 14.5" x (W) 22.5"

### Battery Capacity

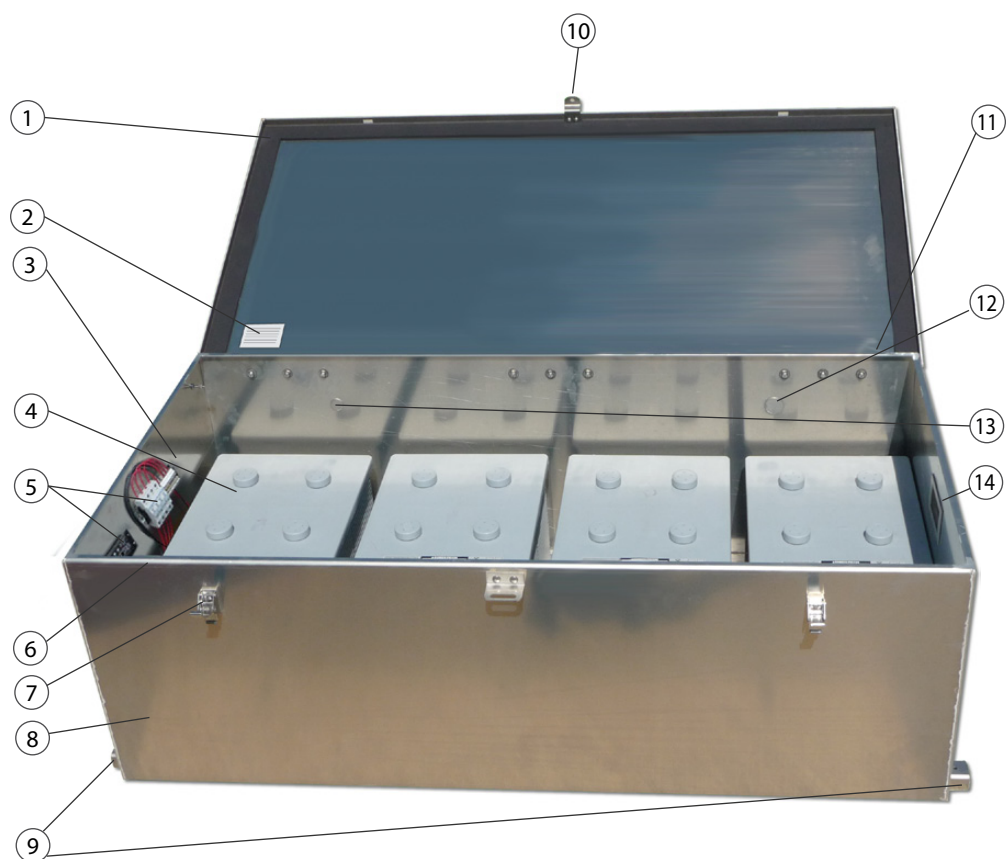
- (10) BCI Group 27
- (10) BCI Group 30
- (10) BCI Group 31
- (4) BCI Group 8G4D
- (4) BCI Group 8G8D

### Weight

- 64 lbs

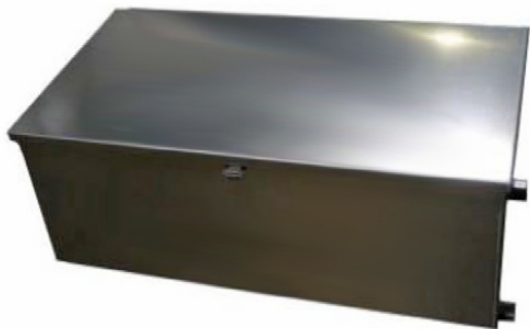




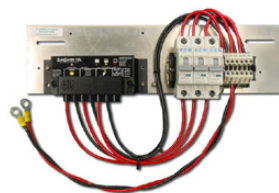


- ① Closed Cell Neoprene Gasket
- ② UL Listing/NEMA Rating
- ③ Back Panel (Not included)
- ④ Battery (Not included)
- ⑤ Electrical Assembly (Not included)
- ⑥ Flanged Door Opening
- ⑦ (2) Stainless Lockable Draw Latch
- ⑧ BBA-10 Cabinet
- ⑨ Mounting Tab
- ⑩ Lockable Hasp
- ⑪ Stainless Steel Hinge
- ⑫ (1) 1/2" NPT Knock-outs (CGB's/Conduit fittings)
- ⑬ (1) 1" NPT Knock-outs (CGB'S/Conduit fittings)
- ⑭ Fiberglass "Insect Proof" Screen on all Louvered

## Additional Views



## Enclosure Options



Custom designed assembly sized to meet solar system requirements